

# Weekly Bulletin

St. Margaret's, St. Joseph's & St. Finnan's

Parish priest: Fr. Tom Wynne. Tel/fax: 01397-712-238 Mobile 00796-588-598  
e-mail : [frtom@rcroybridge.co.uk](mailto:frtom@rcroybridge.co.uk) Parish web site: [www.rcroybridge.co.uk](http://www.rcroybridge.co.uk)  
Blessed Mary MacKillop web site : [www.gaeldom.com/mmk/](http://www.gaeldom.com/mmk/)  
Weekly Bulletin Online: [www.gaeldom.com/bulletin/](http://www.gaeldom.com/bulletin/)

Sunday February 25<sup>th</sup>. 2007



## A Big Mac ? Ugh!

**The sight of a Big Mac will make some people drool at the lips; to others it is repugnant!**

In many ways it is a symbol of the excesses of the modern world in which we live, where millions of children are starving, yet in the western world millions are suffering from obesity.

Lent is a good time to have a look at our own attitude to food, our own diet and our attitude to life.

It was the visual impact of Aids, poverty and malnutrition, which Magnus MacFarlane-Barrow saw in Africa, that made

him give up his university studies to devote his whole life to help starving children. Today he is feeding over 100, 000 children in thirteen different countries, and ensuring their education at the same time for they will only be fed if they come to school. With food in their stomachs, and a good education, these children can make progress in their own country and perhaps one day take an active part in politics and be able to root out corruption and poverty.

*Archbishop Vincent Nichols of Birmingham wrote the following message as an introduction to a Lenten booklet on sale throughout the country:*

***Lent - a time to live more simply***

Lent can be a time to live more simply, to make more space each day for reflection and prayer. A time when we seek to renew our friendship with God

Lent invites us to renew three things in our daily lives:

**Prayer, fasting and alms-giving**

In **prayer**, we reach out to God; in **fasting** we reach beyond our immediate needs to the deeper needs of our nature; in **almsgiving** we reach out to others in their need.

Prayer, fasting and almsgiving go together. Each in its own way, and all three together, break through our preoccupation with self and turn us to face the deeper realities: our absolute **need** of God; our need to address our **self-indulgent habits** and the need to recognise **our dependence** on one another in this one human family,

By **Living Simply** we can take care of what we consume; we can fashion a life-style that is more sustainable, and more in solidarity with the poor.

**Living simply** also leaves more space in our lives for the things of God.

The Archbishop's advice is very wise, and gives us a plan on which to focus our efforts during the six weeks of Lent.

Let's try to follow it, and we will arrive refreshed spiritually at the end of Lent to rejoice with the Risen Christ on Easter Sunday.

# Weekly Bulletin

St. Margaret's, St. Joseph's & St. Finnan's

Parish priest: Fr. Tom Wynne. Tel/fax: 01397-712-238 Mobile 00796-588-598  
e-mail : [frtom@rcroybridge.co.uk](mailto:frtom@rcroybridge.co.uk) Parish web site: [www.rcroybridge.co.uk](http://www.rcroybridge.co.uk)  
Blessed Mary MacKillop web site : [www.gaeldom.com/mmk/](http://www.gaeldom.com/mmk/)  
Weekly Bulletin Online: [www.gaeldom.com/bulletin/](http://www.gaeldom.com/bulletin/)

Sunday February 25<sup>th</sup>. 2007

## Notice Board for Lent



### Weekday Masses

Roy Bridge: Monday and Friday 10 a.m.

Wednesday 7.30 p.m.

Spean Bridge Tuesday and Thursday 10 a.m.

### Way of the Cross

Sunday: Spean Bridge 5 p.m. Roy Bridge 6 p.m.

Wednesday 7.30 p.m. before mass



## The Way of the Cross

The devotion of the Way of the Cross is as old as the Church itself. The sites were marked out in Jerusalem from the earliest times so that pilgrims could follow the way that Christ took to Calvary. There is an old tradition that Our Lady frequently visited the scenes of her Son's Passion, and St. Jerome speaks of the crowds of pilgrims from many countries visiting the holy sites in his day, 4th century. A desire to reproduce the holy places in other lands led to the devotion of the Way of the Cross with its fourteen stations, and these have taken their honoured place on church walls down the centuries. For those who were unable to make a pilgrimage to the Holy Land, they had the opportunity of recalling and meditating on the main incidents of Our Lord's Passion.

We have devotions of the Way of the Cross twice a week in St. Margaret's, and once a week in St. Joseph's. In past years, large crowds, especially families, came to these devotions, and the children learned about the depth of Our Lord's love for us through his sufferings. Nowadays, only a small handful of people come to the Way of the Cross during Lent, and this is very sad, for it means that so many are missing out on the many graces that this devotion offers us. The saints have told us that *there is no quicker short cut to holiness than to meditate on the sufferings of Christ.*

It would be so encouraging to see large number of parishioners with their families returning to this devotion during Lent. The evenings are getting brighter already, and it is a good discipline to turn off the television, and perhaps have your evening meal at a time that will leave you free to come to the Way of the Cross.

There are booklets of the two meditations which we use: one by St. Alphonsus Liguori, and the other by Cardinal Newman (whom we hope may be canonised a saint in the near future). These booklets are available at the back of the church during the week for anyone who wishes to make the Way of the Cross privately.



### Have you thought of coming to a weekday mass during Lent?

We are fortunate that we have mass each day in our parish, alternating between Roy Bridge and Spean Bridge. Mass is the most perfect prayer we can offer to God our Father. Our Lord offers himself on our behalf for all our needs, and we have the wonderful privilege of receiving him in holy communion. An extra mass can obtain so many graces for us. Remember, our Lord is also present in the tabernacle. Perhaps you could find time to pop into church for a visit during Lent. There are lots of things to talk about to him!

# Weekly Bulletin

St. Margaret's, St. Joseph's & St. Finnan's

Parish priest: Fr. Tom Wynne. Tel/fax: 01397-712-238 Mobile 00796-588-598  
e-mail : [frtom@rcroybridge.co.uk](mailto:frtom@rcroybridge.co.uk) Parish web site: [www.rcroybridge.co.uk](http://www.rcroybridge.co.uk)  
Blessed Mary MacKillop web site : [www.gaeldom.com/mmk/](http://www.gaeldom.com/mmk/)  
Weekly Bulletin Online: [www.gaeldom.com/bulletin/](http://www.gaeldom.com/bulletin/)

Sunday February 25<sup>th</sup>. 2007

## Rota for our churches Weekend of March 3<sup>rd</sup>. -- 4<sup>th</sup>.

### St. Joseph's

Reader: Christina Fyfe  
Prayers of Intercession: Margaret Muncie  
Eucharistic Ministers: Moira Coutts Almy Lieder  
Church Cleaning: Any volunteers?

### St. Margaret's

Readers; Rory MacDonald Ishbel Campbell  
Prayers of Intercession: Peter Rose  
Eucharistic Ministers : Catriona MacDonald, Ian MacDonald  
Church Cleaning: Moira Coutts



## Catechism for our children

I am very pleased that four of our parishioners have offered to act as catechists for our children:

Margaret Sargent, Marie Clare Russell, Catriona MacDonald and Marie Ann Wardlaw.

There are 10 Catholic children in Roy Bridge and 18 in Spean Bridge—a total of 28 children.

Mrs Kate MacGillvary, head teacher, has kindly allowed us to use the school at the end of the afternoon lessons.

I will contact all the parents this week to seek their co-operation, and to decide on an afternoon that is most suitable to the children and the catechists.

The Catholic Truth Society has produced some excellent catechism books for primary school children. They are quite expensive at £8 each for the children and £20 for the teachers. Perhaps the parents would be willing to

organise a fundraising event to help meet the cost.

I ask you to keep this proposal in your prayers that it may work out successfully so that our children will have a deeper knowledge of their faith.

## Thought for Lent.... whose job?

This a story about four people named:  
**Everybody, Somebody, Anybody and Nobody.**

There was an important job to be done and **Everybody** was sure that **Somebody** would do it. **Anybody** could have done it, but **Nobody** did it.

**Somebody** got angry about it, because it was **Everybody's** job. **Everybody** thought **Anybody** could do it, but **Nobody** realised that **Everybody** wouldn't do it.

It ended up that **Everybody** blamed **Somebody** when **Nobody** did what **Anybody** could have done!



World Day  
of Prayer



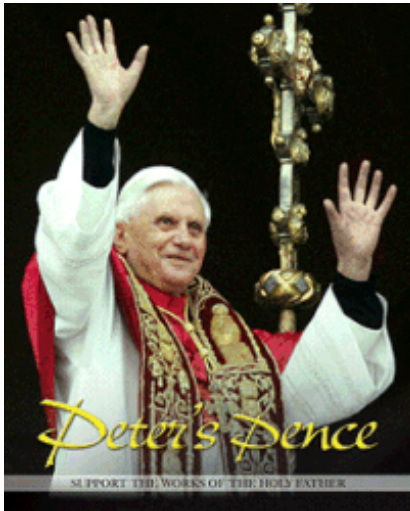
Friday, March 2nd  
St. Mary's. Fort William  
2.30 p.m. & 7.30 p.m.

# Weekly Bulletin

St. Margaret's, St. Joseph's & St. Finnan's

Parish priest: Fr. Tom Wynne. Tel/fax: 01397-712-238 Mobile 00796-588-598  
e-mail : [frtom@rcroybridge.co.uk](mailto:frtom@rcroybridge.co.uk) Parish web site: [www.rcroybridge.co.uk](http://www.rcroybridge.co.uk)  
Blessed Mary MacKillop web site : [www.gaeldom.com/mmk/](http://www.gaeldom.com/mmk/)  
Weekly Bulletin Online: [www.gaeldom.com/bulletin/](http://www.gaeldom.com/bulletin/)

Sunday February 25<sup>th</sup>. 2007



## Collection next Sunday to support Pope Benedict's world charities.

Next Sunday there is a special collection which goes to Pope Benedict to allow him to support various charities throughout the world.

Should there be a disaster, the Holy See can immediately send aid to help those in distress.

The Holy Father also distributes aid to countries where there is poverty and suffering, especially where children are involved.

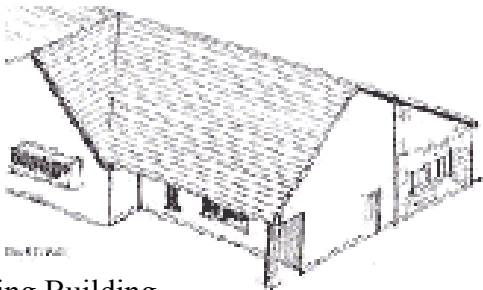
The Vatican has Apostolic Nunciatures (a form of embassy) all over the world, and these ensure the aid goes directly to those in need.

## The future education of our children

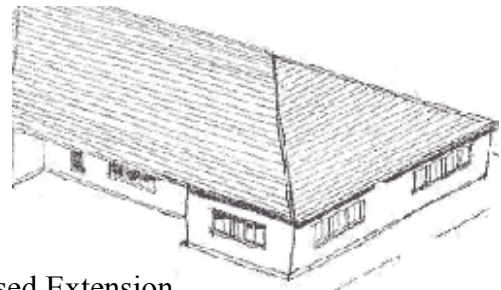
Bruce Robertson, Director of Education, met with members of the community in Spean Bridge school on Wednesday evening, and announced that plans for the extension have now been approved.

It was put to him that there will be a considerable increase of new houses to be built in the area, and will the addition to the school cope with this? There are 72 pupils at the moment in Spean Bridge school and 30 in Roy Bridge school. He confirmed that the two extra classrooms would allow the school to cater for 150 children. However, it is clear that there will be no spare classrooms for extra subjects on the curriculum such as music.

From comments made last week on the radio and in the press concerning the large number of councillors who are retiring from office at the May elections, it appears that they are leaving the incoming councillors with serious finance problems.



Existing Building



Proposed Extension

It will be interesting to see if this will affect our schools.

Above is a plan for the new addition to Spean Bridge school. It will intrude into the car park and the children's playground. No date has been given for the completion of the extension and the amalgamation of the two schools, but it could possibly be well into the next school year before anything happens. In the meantime, Roy Bridge school will have very little spent on basic maintenance.

The name of the school was discussed and also the school uniform, and these will, no doubt, be resolved in good time. Now that a definite decision has been made, I know that the staff, parents and children will go forward with a positive attitude to make the amalgamation a success, and ensure that our children get the best possible education to prepare them for life.

The Roy Bridge community can look back with pride at the manner in which they fought their campaign over the past two years to try to save their school. I hope it will be recorded for posterity.